



THE
GREENWICH
SOCIETY

NEWSLETTER JULY/AUGUST 2023 ISSUE 231

INSIDE THIS ISSUE

AGM Report

Photography competition – glorious images of Greenwich
Summer 23 in Greenwich

Chair's Report to AGM

I am delighted to report that the Greenwich Society has enjoyed a busy and productive year. I wish to thank all our members who have supported our events and those who have simply followed our activities through reading our much-praised newsletter or our handsome website.

Through the work of our various committees, the Society has been active across a broad range of fields. My brief comments focus on five areas (Events and Activities, Traffic and Transport, Planning, the Environment, and Membership).

Events and Activities

Following the restructuring of our Events Committee we have staged a range of new events such as the now monthly Coffee and Chat mornings at the Painted Hall café, a House History workshop and a tour of the King's Troop barracks at Woolwich, in addition to long-established activities like our annual quiz night, the cricket match, a New Year supper, our annual lecture and a range of evening talks. Two notable events were the reopening of the Victorian drinking fountain at the top of Hyde Vale and, thanks to support from the Novotel Greenwich hotel, the planting of a tree on the Greenwich Station forecourt commemorating the life and many Greenwich links of Her Majesty Queen Elizabeth II.

Traffic and Transport

The Society has made several submissions to Greenwich Council's new traffic and transport strategy, pressing for the adoption of an ANPR scheme like that successfully implemented elsewhere in London. We have also continued to promote proposals to widen selected pavements and narrow carriageways in Greenwich town centre to improve the pedestrian experience and environment. In addition, we are collaborating with other local groups pressing SouthEastern Trains to reinstate train services deleted during the Covid crisis.

Planning

As always, planning matters have been a primary focus of the Society's activities. It is gratifying when developers engage early with the Society about their proposed schemes. Alas, our efforts supporting RBG and local residents objecting to aspects of the 1 Hyde Vale redevelopment proved unsuccessful when, after being repeatedly rejected by the council, the developer's appeal was upheld in April. Various planning matters pertaining to the Trafalgar Tavern have required the attention of our planning committee during the year.

The Environment

Our newly established Environment Committee is pursuing strategies to enhance and promote our environmental stewardship. We are engaging with Greenwich Council to promote sustainable practices such as expanding the provision of water bottle refill stations. In addition, committee members recently visited the SELCHP facility in Deptford to improve our understanding of how waste is managed locally. Another special focus of our work has been the forming of small groups dedicated to creating pocket gardens on uncared-for public spaces dotted throughout our neighbourhood. We are also working with the council to reinvigorate the rather sad-looking Burney Street/Royal Hill garden, hopefully utilising s.106 funds from a redevelopment nearby.

Membership

During the year we undertook a thorough review of our membership records. Our current active membership consists of nearly six hundred households and local businesses, a lower figure than was previously quoted. We will instigate a membership drive early in the life of our incoming Executive Committee.

I sincerely thank all the members of the Executive Committee for their hard work and personal support during the year. The committee also wishes to acknowledge the hard work done by our many volunteers, especially the large team who, rain or shine, deliver our newsletter across Greenwich.

I especially wish to thank Jonathan Chandler who, after some fifteen years of involvement, is stepping down as our Hon. Secretary, website manager and Events Committee member. Jonathan has made a massive contribution to the Society over all these years, not only in ensuring the smooth running of things but also in providing an endless stream of magnificent photos that makes our website and newsletter so appealing. I am pleased to announce that our new Hon. Secretary is Christopher Swift, a retired lawyer who lives in West Greenwich. I also sincerely thank our Hon. Treasurer Philip Craig who has retired from this role, being replaced by Miles Storey.

I conclude my report on a sad note. In recent days we have lost one of the Society's most distinguished figures, Sir Alan Bailey, who has died aged ninety-one. A former head of the Treasury and Department of Transport, Alan was a Greenwich Society committee member from 1994, our Hon. Treasurer in 1996, Hon. Treasurer and Vice-Chairman in 1997, Chairman 1998-2000, Vice-Chairman 2001-2 and remained on the committee until 2005. I suspect there can't be many community organisations that can claim the Head of the Treasury as their Hon. Treasurer! We offer our sincere condolences to Alan's family. Our obituary is on page 12 of this newsletter.

Here's to another year of challenge and success for the Society!

Report Annual General Meeting 2023

The Annual General Meeting of the Society was held on Wednesday 17 May 2023 in a lecture theatre in the School of Architecture of the University of Greenwich. Forty members attended together with some other local residents.

The formal business, entirely uncontroversial, was dispatched briskly. The Chair welcomed those attending and presented the first of the reports about the Society's affairs over the past year. This is reproduced elsewhere in the newsletter and shows that the Society continued to flourish as vigorously as ever. Neither Miles Storey, the Treasurer, nor Philip Craig, from whom Miles took over the office in January, could be at the meeting. From Miles' report and the accounts, it was clear that the Society remains in a strong financial position. The Chairman expressed the thanks of the Society to Philip for his work over four years; he remains a member of the Executive Committee. A new Secretary, Christopher Swift, was appointed, having been ratified as a member of the executive. Otherwise, the composition of the

executive was unchanged, with Gillian du Charme, Kevin Fewster and Lysanne Wilson elected to further terms.

Questions from members followed, covering a number of issues of local concern, including traffic issues, the state of the town centre and the new railway timetable.

The Chair thanked Jonathan Chandler, who retired from the Executive Committee having held the Chair and Honorary Secretary's position over the last fifteen years, for his invaluable services to the Society and presented him with a set of wine glasses, confident that they would be put to good use. Jonathan, we are happy to know, will continue with other activities in the Society.

Following the meeting Jeremy Banks, a Society member who contributes cartoons to the newsletter, showed a selection of his work for the *Financial Times*, where he is the resident cartoonist *BANX*.

The evening ended happily with a drinks reception.

Society Events **Jacky Robinson, Chair of Events Committee**

As I write this in early June it does seem that summer has arrived at last! Let's hope the weather is kind and stays fair for some of the events we have planned for you and your families.

Volunteers needed!

The committee is a small and friendly one and is eager to welcome new members who are willing to help with the development, booking and organisation of our activities. **Just contact us at events@greenwichsociety.org.**

Riverside Party

24 September, 12.30–3.00 pm
£25.00 for members

We have booked the Curlew Rowing Club on Crane Street with its wonderful views of the river. There will be a buffet lunch provided and a bar for you to purchase your drinks.

Numbers will be limited so do book early through the website. Details will be sent to members nearer the time.

19 October, 7.00 pm
West Greenwich Library

Talk by Ana Sutherland is based on her new book about modern architects and their work in Greenwich. She will also be holding a walk for Society Members on 28 October, details to follow.

Coffee and Chat

Wednesday 5 July, 2 August, 5 September,
11.00 am. No charge.

Just come along and buy yourself a coffee in the Undercroft café under the Painted Hall. Meet other members and listen to a brief ten-minute talk on a topic of local interest. At recent meetings Kevin Fewster spoke about the history of the Greenwich Society and David Whittaker told us about the Maidenette bra factory on Point Hill overleaf.

Perhaps bring a friend and encourage them to join the Society?



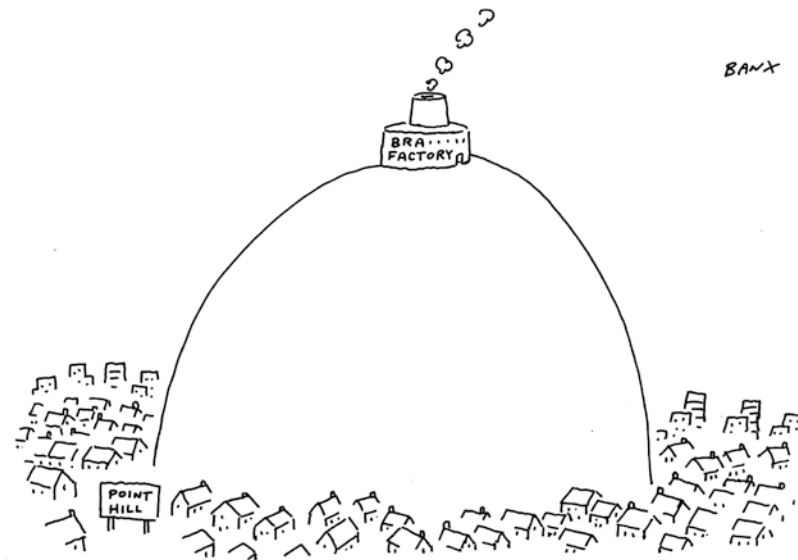
Annual Cricket Match
v the Blackheath Society
Greenwich Park, Tuesday 4 July, 6.00 pm

What better way to spend a summer evening than enjoying cricket in the park? Come and cheer our team on — bring your friends and family, pack a picnic and join in the fun. This surely must be the year we win the Golden Elephant trophy!

The Maidenette Foundation Factory, Point Hill

David Whittaker

David, who is a member gave this talk at our June Coffee and Chat morning. It's a fascinating vignette of Greenwich history!



An advertisement for the 'Maidenette' range of brassieres from an American magazine in 1949

Another indication of the changing nature of the area, with the demise of large eighteenth- and nineteenth-century houses, was the conversion of what was 5 Point Hill (since demolished and replaced by numbers 17-25) to a factory in 1947, later extended. Planning permission was granted by the London County Council, despite objections from Greenwich Council. The factory in question is described in contemporary telephone directories as the 'Maidenette Foundation Ltd, Brassieres and Corset Manufacturers', which operated in the building until 1962. Other sources refer to the company as 'Beachwear Manufacturers'; swimwear was being made from at least 1950. By 1965, production had been moved to Porchester, Hampshire.

The firm was a subsidiary of the Maiden Form Brassiere Company ('Maidenform' from 1960) founded in the United States in 1922 as the Enid Brassiere Manufacturing Company by Ida and William Rosenthal and Enid Bissett. The three had already designed a new style of brassiere, which Ida and Enid were supplying as a part of their dress-manufacturing business. The design was in direct contrast with, and in response to, one of the prevailing fashions in the 1920s for flatter figures, with emphasis on the female form. In addition, it offered a more comfortable alternative to a corset. Demand was such that the firm started to manufacture and sell the underwear separately from dresses, eventually specialising solely in brassieres, although expanding into other types of underwear in later years; by 1961 it was making swimsuits incorporating Maidenform bras.

A newspaper advertisement from 1947 recruiting 'experienced and learner machinists for light clothing' for the factory stated that wages were good, that there was a canteen and a radio, with a five-day week.

According to one author on the subject, the 'Maidenette' range was launched in 1949, although underwear of that brand and the trade mark were already in existence and the Greenwich factory was already open – a relaunch perhaps? The design was aimed at 'younger women', partly as the company was attempting to modernise its image in order to compete with its rivals. Maidenform advertising campaigns post-war were widespread, high profile and very successful. Although regarded as risqué in the early years, the idea was that women should be able to see what the brassiere might look like in reality. One example of advertising can be seen above although the most well-known were those of the 'I dreamed I... in my Maidenform bra'. This could be anything from 'shopping' to 'going on a tiger hunt'!

David asks if there are any members who can help him with his research into this topic. Please contact our events team.

Environment and Safer Neighbourhoods

Sheila Keeble

Glyphosate weedkiller – Why is RBG still using it?

Many of us had assumed that Greenwich Council had stopped using weedkiller for streets and public spaces. There had been no street spraying since before the pandemic in most of East and West Greenwich. Unfortunately, this came to an abrupt end in early April. There were immediate complaints from residents looking after waste ground or tree pits all over the area as seedlings and new plants started to die off. There was no warning given or information on what had been sprayed. We then started to hear similar complaints from park and gardening volunteers in other parts of the borough. Following a Freedom of Information request it was revealed that RBG have spent £31,000 this year on purchasing glyphosate weedkiller.

Glyphosate, the active ingredient in all generic weedkillers like Roundup, is made by Monsanto (now owned by Bayer AG). It has been the subject of a number of lawsuits in the US claiming it is carcinogenic and Monsanto has had to pay huge damages. It is also toxic to all pollinating insects. Glyphosate is banned in all Western European countries. Many English councils and London boroughs have also banned it, including Hammersmith and Fulham, Westminster, Hackney and Sutton. Other boroughs have very strict rules for its use – usually only for Japanese Knotweed and Giant Hogweed – and have plans to stop using it completely. Greenwich is seemingly one of a handful of London boroughs with no plans in place to restrict or stop its use.

London boroughs that have banned weedkillers have a number of strategies for dealing with weeds. The most effective method is to encourage residents to take care of streets and tree pits, which is what the Greenwich Society and other local groups have been attempting to do. Upskilling the maintenance staff also helps so

that they can undertake selective hand weeding of the most damaging species like buddleia and sycamores rather than kitting up in hazmat suits to spray randomly without any consideration for residents and their children, pets or honey bees.

The Greenwich Society Environment Group has spoken to Deputy Council Leader Averil Lekau about this issue and we hope that with sufficient pressure from residents, RBG will give up this harmful practice. If you are concerned about the indiscriminate use of weedkiller by RBG, **please email Averil Lekau at averil.lekau@royalgreenwich.gov.uk and copy in your local ward councillors.**

Water Fountains – An Update

We highlighted the water refill issue when the Environment Group met Averil Lekau and a number of council officers on 17 April. We believed that we had a firm commitment from officers to persuade town centre businesses to put signs in their windows which the council would provide while the issue of the water fountain with no water supply was sorted out. Sadly, with the tourist season underway, there are no signs in any cafés and restaurants that we could find beyond the original two. And of course, the water fountain remains dry. The pocket park at Mell Street also still has a dry water fountain that could be so helpful for visitors and residents if it flowed! On a more positive note, we recently met with SouthEastern Trains and Network Rail to discuss the state of Greenwich Station and they resolved to look at installing a water refill point there.

Latest Safer Neighbourhood News & Community Safety

The Greenwich Park and Creekside Safer Neighbourhoods ward panel met on Tuesday 23 May at St Alfege Church Hall.

Residents, Safer Neighbourhoods police, local ward councillors and the council's Safer Spaces team met to share information, discuss new and ongoing crime-related issues from different areas in each ward listed below and follow-up actions:

- **The theft of cars**, particularly VWs and Alfa Romeos, in the Hills and Vales.
- **Street robberies and mobile-phone snatches** around Greenwich town centre, Millennium Quay, Creek Road, New Capital Quay and the river path mainly by groups on pedal cycles. Ongoing operations in the area to tackle this. **Remember to be vigilant of your surroundings when out and about.**
- **Reports of cars speeding** in Greenwich South Street.
- **Mobile-phone snatches** in Greenwich Park and cyclists speeding along the Avenue to be referred to the Royal Parks Police.
- **Anti-social behaviour, drug use and dealing** around the town centre and nearby estates; some of this activity involves groups from outside the area.

Anti social Behaviour

Anti-social behaviour is a serious issue that can cause much distress and nuisance. Anyone who has experienced ASB and reported it at least three times within the last six months to the Police or Royal Borough of Greenwich can request an anti-social behaviour case review (also known as the Community Trigger). This gives the victim the right to demand that agencies deal with persistent anti-social behaviour such as noise, neighbourhood nuisance etc.

To find out if a case qualifies for a review visit the RBG website: https://www.royalgreenwich.gov.uk/info/200202/community_safety/1567/anti-social_behaviour_community_trigger

For support with anti social behaviour visit the ASB Help charity website <https://asbhelp.co.uk/>

The next Greenwich Creekside & Greenwich Park ward panel will meet on 25th July, 18:30 at Armada Court Community Hall, 21 McMillan Street, SE8 3EZ. For an invitation to join this meeting email PC Jaime Welch Jaime.Welch@met.police.uk

More residents are needed to join their local panels. Details of all Safer Neighbourhood Panel meetings in your area are listed on the events page of the Safer Greenwich website and local crime data on the Met Police website: <https://www.safergreenwich.org/events> <https://www.met.police.uk/area/your-area>

David Scales

Planning Matters

The Arrival of *Ocean Diva*

Giant disco boat *Ocean Diva* is now moored in the Royal Docks and will be making some test journeys along the Thames in the next few weeks, including a trip to Greenwich Pier scheduled for 26 June. The Greenwich Society continues to liaise with the River Residents Group, an umbrella group comprising associations from Lambeth to Newham, all with concerns about the potential noise and crowd control impacts of *Ocean Diva*. There will be a new licensing application to Newham Council which will require everyone to resubmit their objections.



The *Cutty Sark* Figurehead Saga

(Ref: 23/0550/L)

The strange saga of the replacement figurehead of Nannie took everyone by surprise, especially as most of us had no idea that the *Cutty Sark* is regarded as a listed building for planning purposes. The Greenwich Society submitted comments on the retrospective planning application although there is no consensus on the artistic merits of the new figurehead. The new Nannie is based on a design sketch which RMG had found in its *Cutty Sark* records, thus the new figurehead is closer to the original designer's intentions than the one it replaced.



Ikea Car Park Development

(Ref: 22/1077/F)

On 6 June, London Square withdrew its application for a 1290 residential unit mixed development on the site of Ikea's car park and the B&Q store. This was not unexpected as the application was originally scheduled to go to the RBG Planning Committee in October 2022. It would seem that unfavourable interest rates, spiralling prices for building materials and a shortage of construction workers have made this large project unfeasible. The Greenwich Society had some serious concerns about this development, not least about the morality of expecting people to live in such a highly polluted site surrounded by major roads. Whether B&Q will now remain on the site is unclear. What is highly certain is that this will not be the only big local project that bites the dust.

Trafalgar Tavern

(Ref: 22/2820/F and 22/2821/L)

This application to add two extra floors to the Trafalgar Tavern by refurbishing the third floor and building a roof extension has been turned down by RBG planners. The decision notice says the proposals 'would fail to respect the character and appearance of the host Grade II Listed Building, the setting of the Conservation Area, World Heritage Site and designated strategic view'. Users of the Thames Path will be unhappy that there was no progress on the other part of the application to install a scissor lift to remove the unsightly bins from Crane Street into the pub's basement. In fact, recent repaving works in Crane Street seem to have made this option impossible.



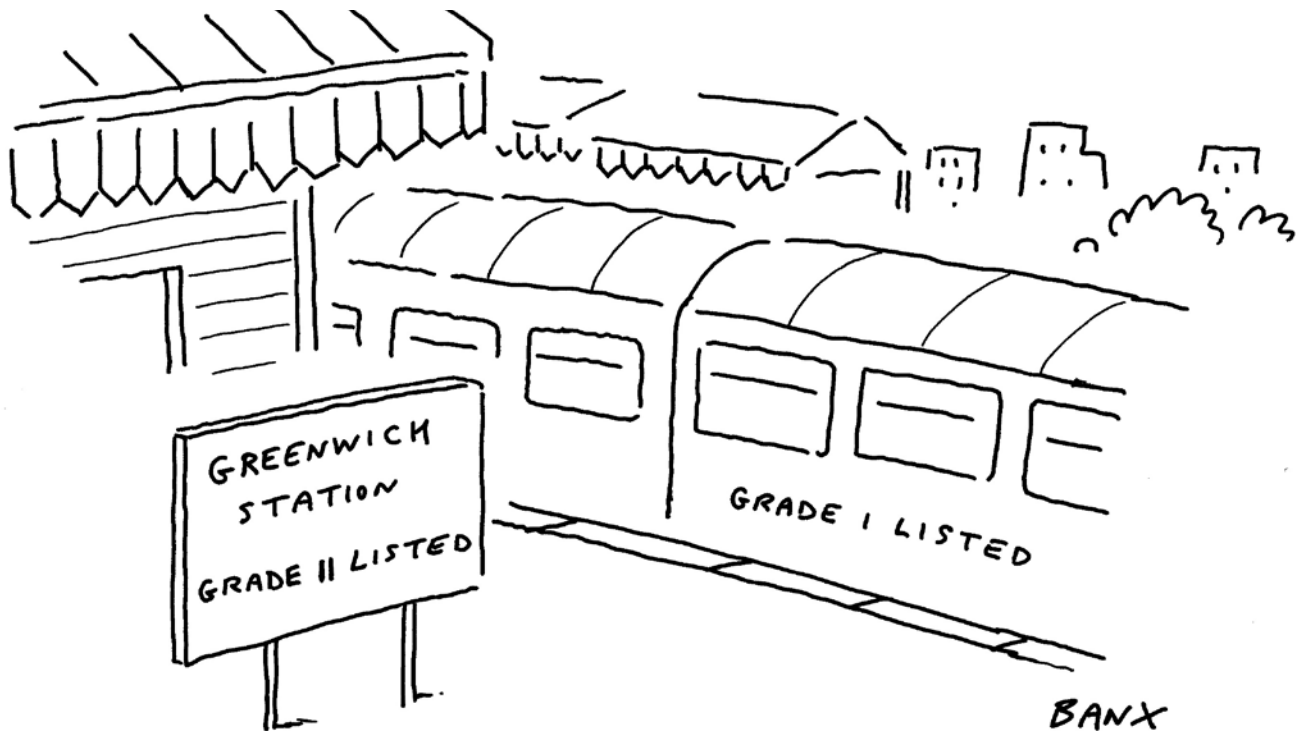
5G Mast at Vanbrugh Park

(Ref: 23/1520/T3)

Our Planning Group submitted objections to this application by CK Hutchison Networks, owner of Three mobile, to site a 15-metre 5G mast with three ancillary boxes outside a living-room window in Vanbrugh Park Road. It is not the first eccentric 5G mast application – last year there was an application by Three mobile to put an 18-metre mast practically in the doorway of Iceland in Trafalgar Road. It is not clear why 5G masts are not sited on the tops of buildings like their predecessors. Unfortunately, it is true that London has some of the worst mobile and broadband connectivity in Europe and many of us rarely see a 3G signal, so new masts will have to go somewhere. But we already have a proliferation of street clutter with bollards, out-of-date signage and 'street hub' electronic advertising hoardings. As part of our objection to the Vanbrugh Park application, we have asked the council to consider a code of practice for mobile companies which could be included in the revised Local Plan so the criteria for siting new kit are transparent.

The State Of Greenwich Station

Mike Sparham



The London and Greenwich Railway was the first passenger railway in London, and the present station building in Greenwich was opened in 1840. It was moved a short distance to its current location in 1878 when the line to Maze Hill opened and Greenwich ceased to be a terminus.

The station building is Grade II listed and, with the exception of Sydenham (which was built in 1839), is the oldest station building still in operation as a station in south London. It was designed by George Smith, an architect to the Mercers' Company and a Fellow of the Royal Institute of British Architects. He also designed the Blackheath station building and housing around Pelton Road and Christchurch Way in East Greenwich.

At its opening the Greenwich station building was described as 'magnificent'. It is in a reasonably good state of repair but has, for some time, looked a little unloved. Tourists arriving in Greenwich by train to visit the World Heritage Site are likely to be a little underwhelmed and possibly confused by their first impression.

For some time, the Greenwich Society and the Rail Users Group have been seeking improvements to the overall ambience of the station and a greater recognition of its history. Recently the Society planted a new tree in the station forecourt with support from Novotel.

A site visit with representatives from Network Rail and SouthEastern, including the Area Manager, took place in early June to look at possible improvements. Issues we raised included: brightening up the frontage with some plants; removing unnecessary posters and de-cluttering the entrance hall; moving the plaque and photos to a more prominent position; re-siting the direction



board above the exit; commissioning some heritage boards for display; artwork on the end wall of platform 2; improving the foot tunnel; and better signage on platform 1, directing visitors to the town centre. We also discussed the possibility of Royal Museums Greenwich providing information on visitor attractions.

The meeting was a positive one, and the company representatives expressed support for working with community groups. We recognise that both companies are state-owned and accountable to DfT, and so operate under strict financial constraints, but we think there are improvements that can be made at a relatively small cost. This is something the Greenwich Society and the Rail Users Group will be following up.

Members' views would be very welcome!

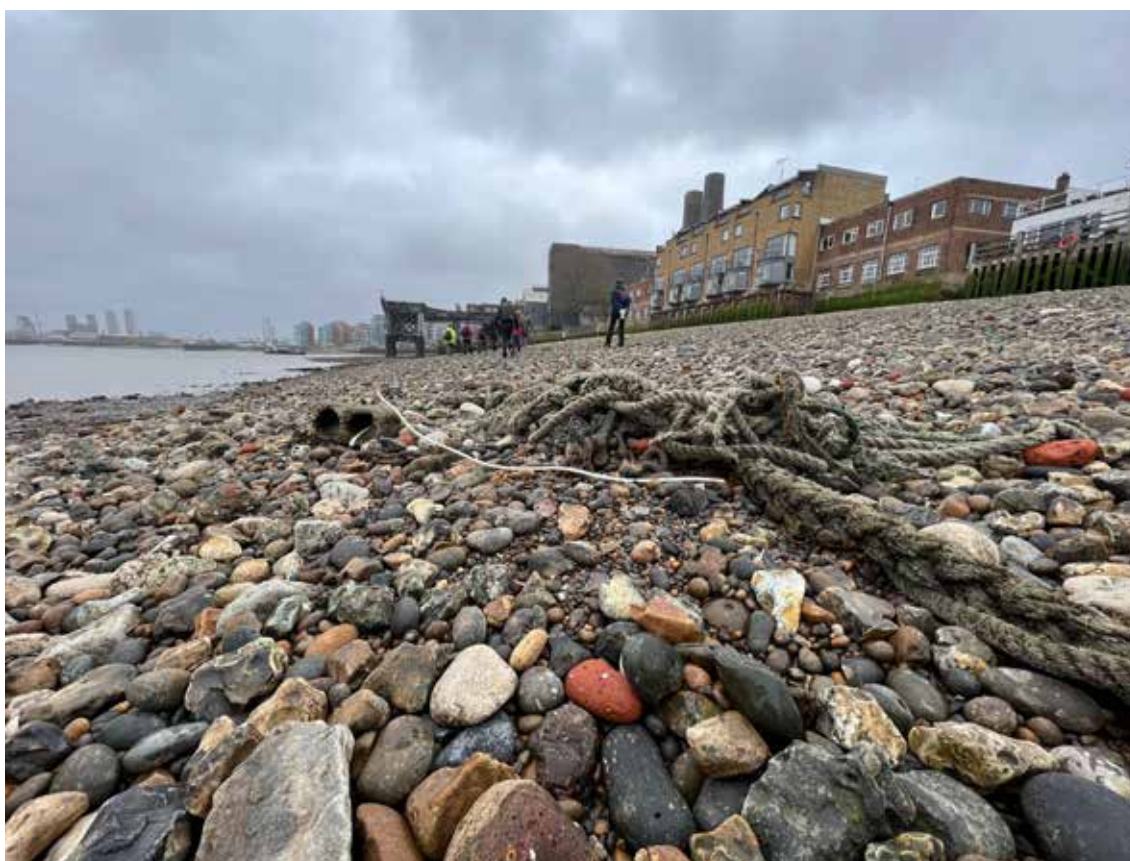
Photography competition 2023



Historic Greenwich category winner
Karin Tearle - 'Woman bathed in light,
Painted Hall'



Greenwich Park category winner
Ian Welsby - 'Freshly fallen snow'



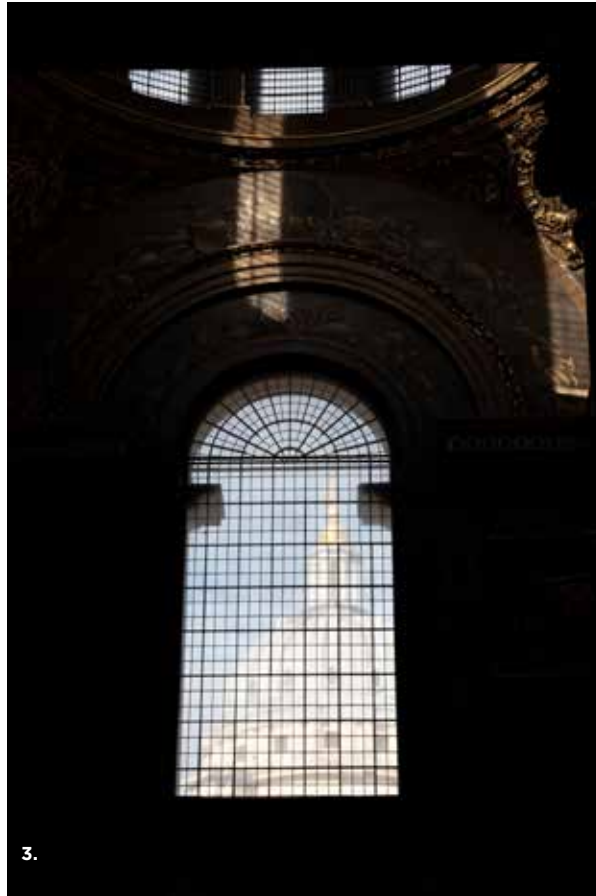
River Thames at Greenwich category winner
Liz Pratt McLean - 'Mudlarkers'

**3. Portfolio category winner
Alan Cartwright**

- a 'Concrete reflection'
- b 'Bandstand sparring'
- c 'The Royal Observatory in
February fog'
- d 'Queen's House and Canary Wharf'
- e 'Benches, early morning'
- f 'Gates to Greenwich Park'



**Greenwich Park Under-16s category winner
Siena Ulrich - 'A Step Inside 1'**



Runners-up

River Thames at Greenwich
1. Michael Elliott - 'Power of all kinds'

Greenwich Park
2. Karin Tearle - 'Fog in Greenwich Park'

Historic Greenwich
3. Karin Tearle - 'View of chapel from Painted Hall'



Highly Commended

River Thames at Greenwich
1. Michael Elliott - 'Dry docked'

Historic Greenwich
2. Liz Pratt McLean - 'Devonport House'

Greenwich Park
3. Macayla Riney-Lucas - 'The wonder'
4. Karin Tearle - 'Sunset in Greenwich Park'
5. Ian Welsby - 'One dog who loves snow'



Pop along to West Greenwich Library and take a look at the exhibition of the winning entries of our recent photographic competition. You might like to buy one of the prints and the library staff will accept cash or you can pay through the website. The exhibition runs until 28 July.

Fine Words and Tributes

Sir Alan Bailey KCB

A personal memory by Lesley Hodsdon



It was with great sadness that I heard about Alan's death at the age of ninety-two recently. I have a wonderful memory of Alan at the Friends Jazz in the Park last year when the whole crowd sang happy birthday to him, in the sunshine with a glass in his hand!

How do you encompass such a rich and fruitful life? I knew him as a Greenwich

resident after his magnificent career in the Civil Service becoming, in the 1980s, Deputy Permanent Secretary at the Treasury and then Permanent Secretary at the Department of Transport. His impact on the UK's transport infrastructure could be defined by the public/private sector partnership he pioneered for the building of the Queen Elizabeth Bridge at Dartford, later used extensively as an economic model by successive governments.

But I would like to pay tribute to his commitment to his local community. Our chair Kevin Fewster at our AGM, paid homage to his role in the Society over many years including as chair — a wise voice on strategy and proposed local initiatives delivered at our meetings with a certain puckish smile! His long involvement with the Friends of Greenwich Park was vital in maintaining the resident input to Royal Parks. He delivered our newsletters, sang in the Singing for Pleasure choir at Mycenae House, took a lively political interest in the local council and supported our MP with his knowledge and experience of government. All quietly delivered without fanfare. How fortunate we are to have had his support.

Alan was also a writer and loved poetry as a passionate means of expressing his feelings. At his wake we were fortunate enough to see some of these. I have included one of them with the family's permission. The last line says most eloquently his view of the world!

This poem has been kindly shared for publication by the Bailey family

Cedars in the Park

by Alan Bailey

Cézanne loved these colours:
Shadows not black, not blue,
Not brown, but a deeper green
Than you would have thought possible —
With — showing through —
Touches of wood-brown, grass-green, sky blue,
Giving the depth he searched for.

A winter wind
Stirs the huge branches
Around the old trunk,
Where stumps show that others
Have fallen to the elements,
Adding a frisson of fear
For people who walk below
Enjoying the spectacle.

May these be long preserved
From beetles, gales and health-and-safety men.

21 December 2009

Geoff Brighty - a tribute and thanks by Christopher Swift

Geoff Brighty served on the council of the London/Royal Borough of Greenwich for thirty-two years. With a single break of four years he was a councillor from 1986 until 2022, representing first Kidbrooke but for most of the time various manifestations of the Blackheath ward, including Westcombe Park. He held a range of offices in the (permanently in) opposition Conservative group on the council: in a different world he would have been made mayor of the borough. But what he found most rewarding was his work for the residents of his ward. He had a well-deserved reputation as a quiet but effective representative of local opinion and he was tireless in defending residents' interests and in seeking to resolve the problems they encountered with council services. His hard work and dedication were reflected in the loyalty of the electors: they rewarded him by returning him as the only Conservative councillor in Blackheath Westcombe at several recent elections. He has now moved to become the Chair of the Westcombe Society to continue his commitment to the area. The Greenwich Society sends him its thanks and best wishes in his new role.

Local Icons

Ewan Hooper, the founder of Greenwich Theatre

A personal tribute by David Drummond

Ewan was eighty-six years old and his end came on 24 May after serious illnesses resulting from a stroke. Born in Dundee, he trained for the stage at the Royal Academy of Dramatic Art. Ewan Hooper's roots were in Scotland and in the 1980s he often returned there where he founded and directed the Scottish Theatre Company.

He had a varied and successful career as an actor, appearing in the classics on stage with broader fare on television. Early in his career, he gained good experience with the well-established Bristol Old Vic and the Royal Exchange in Manchester. It was at Bristol he met his wife-to-be, actress Marion Fiddick. With a prominent role in the police series *Hunter's Walk* his credits for television span virtually every series from *Dr Finlay's Casebook* via *Coronation Street*, *Hi-de-Hi!*, and *The Avengers* to *Doc Martin*. On stage in London, frequent work was at the Royal Court Theatre including my own memory in 2011 of *Remembrance Day* enjoyably partnered with Sam Kelly in 2011. But I regret not seeing him with John Gielgud as William Shakespeare in *Bingo*. He was one of several actors to be one of the recurring cast of two in the long-running *Woman in Black* at the Fortune Theatre. On film, he may be seen in *Kinky Boots*.

However, it was in Greenwich where he had made his home that he had his greatest achievement in providing us with the Greenwich Theatre. Noticing the dilapidated state of the old music hall it had once been, he drew others to its potential and badgered Greenwich Council, its owners, to drop its intention to demolish it while he sought funding. A local pub the Green Man fund-raised music hall evenings, encouraging an action group to form The Greenwich Theatre Trust which, in turn, sired The Friends of Greenwich Theatre to further the funding. With the Arts Council and Lewisham and Greenwich councils, a governing body had now formed to become the board for the restored theatre.

With Ewan as founder and artistic director, it finally opened on 21 March 1969 with Ewan's own musical creation *Martin Luther King*. He built a strong team to successfully establish a theatre with a growing reputation for fine productions. He nurtured a youthful interest in theatre by founding Greenwich Youth Theatre (GYPT) in Plumstead, in addition to the conversion of an old Tramshed in Woolwich for more varied entertainment, now recently reopened. The excellence of a production would attract managements from the West

End just as it did playwrights to premiere here.

Greenwich was to become the base for the plays of Alan Ayckbourn prior to West End transfer. John Mortimer's *A Voyage Round My Father* began here as did *Another Country*. Michael Frayn and Peter Nichols added to the theatre's reputation with their plays. There was a prestigious season directed by Jonathan Miller. Though the average run for a production was six or seven weeks, on occasion there was an odd week to fill, giving an opportunity for solo performances. Needing to do this, Ewan adopted a suggestion from an agent specialising in variety, but he had scant knowledge of who was performing beyond that he was a comedian. Unable to attend the early part of the first night of this engagement, on arrival at the theatre he was baffled by the sound of hysterical laughter emerging from the stage. Max Wall had arrived! And we, who subsequently enjoyed his performances as Archie Rice, Malvolio, his own *Aspects* or *Krapp's Last Tape* with his tape recorder are naturally grateful that Ewan Hooper gave him this opportunity to perform it.

The Fan Museum by Tim Barnes

Too few residents of Greenwich and members of the Society are familiar with the Fan Museum and its treasures. The Fan Museum at 12 Croom's Hill is unique. There is no other museum in the world dedicated exclusively to the history of fans and fan-making. The museum was created in 1991 by H el ene Alexander and her husband the late Dickie Alexander. H el ene is as unique a person as the place she created. She remains the presiding genius of the museum, with an encyclopaedic knowledge of fans. Rather than resting on her laurels with a collection of over seven thousand objects, H el ene is still acquiring historic fans.

The museum embraces two discrete collections, the first being H el ene's personal collection and the second being the Fan Museum Trust Collection, containing gifts, bequests and acquisitions. In the collection are fans painted by

eminent artists such as Gauguin and Whistler, historic fans, and royal fans, operatic fans and many, many more. The provenance of each of them and the details of the artist and the pictures on the fans are meticulously recorded. To be taken around the collection by H el ene is something for which I personally can vouch is an unforgettable experience.

In addition to the fans on display you can see the room where many of the fans are stored. If you ask to see the oldest fan, or an artistic fan or a Japanese or South American fan or any other specified fan a drawer will be pulled out and you will see the requisite item. At the back of the house is an Orangery which is available for private hire. Details can be found on the website of the current exhibition on Coronation & Celebrations Fans.



We have arranged a private tour on the afternoon of **Tuesday, July 18 starting at 3 pm**. The museum has generously agreed to a discounted price of £12 per ticket, which includes a tour of the museum and tea in the Orangery afterwards. There is a maximum number of twenty tickets available via the Greenwich Society website.

Summer 23 in Greenwich

It's time to soak up the summer sunshine in Greenwich! Eventful evenings, holiday happiness, outdoor occasions, taste summer's sweetest fruit in Greenwich.



'Greenwich Park' By Edie Wickham, Aged 6

Dig deeply into Greenwich's summer bounty

From Maritime Greenwich to Greenwich Peninsula, Woolwich, Eltham and Charlton, the entire borough promises a smorgasbord of summer celebrations. Long, light-filled evenings, sunshine warming the bones, and a hectic schedule of events, parties, festivals and performances make the Royal Borough by the River the place to be this summer. There's LGBTQ+ Pride Month, open-air theatre, river cruises, family fun, the evening events of Greenwich Lates and much, much more to enjoy!

Family fun in Greenwich this summer

Don't fret over how to keep the kids engaged and entertained: Greenwich is totally geared for family good times this summer! There's everything from hands-on crafts workshops, fun educational trails to help kids explore our world-class museums, sushi-making sessions, real medieval jousting, 1980s-style Crazy Golf, indoor trampolining and cosmic planetarium shows. Long summer days making you itch to get out and active with the kids? Greenwich has heaps of parks and open spaces - from former royal hunting grounds dotted with ancient oaks to London's only elevated, linear riverside park The Tide.

Get set for Greenwich Summer Sounds!

The Old Royal Naval College will echo with music and merrymaking during the inaugural Greenwich Summer Sounds this July. Running from Sunday July 4 to Thursday July 8, it promises to be one of the summer's marquee events, bringing together pop artists from the 60s to the present amid the stately architectural ensemble that's the pride of Maritime Greenwich.

The first-ever line up sure is a stellar one! Get your groove on with Nile Rogers and Chic; croon along with Tom Jones as he belts out his back catalogue of hits; get your fill of good-time hip hop with the Black Eyed Peas; or rock out to British indie stalwarts Kaiser Chiefs. And the support acts are sensational too: MistaJam; Scouting for Girls; Ellie Sax; and The View. Doors open at 5.30 pm and you'll find plenty of street food and festive drinks on offer.

Greenwich's great, green outdoors

Make the most of the salad days of summer in Greenwich this June and July. There's open-air theatre with Shakespeare in the Squares: Twelfth Night at Charlton House (29 June) and Theatre Nights at St George's Garrison Church (multiple productions and dates across June and July).

Or grab some fresh air on our walks and guided tours. Choose from: St Alfege to St Mary's Church: A Guided Walk by Dr Alison Fisher; Film & TV Location Tour; Greenwich London Walk; Wren Tours: 300 Years of Wren; and plenty more!

Of course, nothing beats being on the water in summer. Choose from a ThamesJet Speedboat ride, sightseeing cruises with City Cruises and boating between Greenwich, Greenwich Peninsula and Woolwich with Uber Boat by Thames Clippers.

Midsummer dreaming with Summer Lates.

Our Summer Lates programme will help you pack the long midsummer evenings with stimulating events and activities. The Greenwich Lates programme includes old favourites like Park it in the Market (vintage cars at Greenwich Market, 7.30–10 pm Thursday 27 July) alongside the inaugural Greenwich Summer Sounds (acts including Tom Jones and Nile Rogers performing in the Old Royal Naval College grounds from 5.30 pm, 4, 6, 7 and 8 July).

Events list for this summer

For more details on all of these please visit the Enjoy Royal Greenwich website: enjoyroyalgreenwich.org.uk

Delve into the secrets of St Alfege Church on select dates in June and July with a **Hidden Spaces Tour**, part of the Heart of Greenwich Place and People Project.

Royal Museums Greenwich has a range of summer activities for families across all their sites so check their website www.rmg.co.uk

The World Reimagined, now until 25 June. Thirty-six globes, one groundbreaking outdoor art experience: see The World Reimagined at the National Maritime Museum.

The World Reimagined aims to transform how we understand the transatlantic slave trade and its impact on all of us in order to make racial justice a reality. A series of giant globes, each adorned with a unique artwork, are laid out across the lawns of the National Maritime Museum.

Head down to **Royal Arsenal Farmers' Market** for 'Summer Lates', noon–8 pm on June 30 and July 1. Expect balmy Saturday evenings of street food, cocktails and free live music.

Greenwich Family Arts Festival 2023 (July). Venue: various locations around Greenwich. Join Tramshed across the Royal Borough of Greenwich this summer, for FREE outdoor shows, workshops and activities. Nearby and open to all.

Park It in the Market, 27 July 2023 at Greenwich Market. Park It in the Market returns to Greenwich Market this year. There will be live Rock 'n' Roll 'n' Rockabilly from the ever-popular Ronnie Ripple and the RipChords, classic tunes on Vintage Vinyl from The Vinyl Countdown, and the always-welcome return of The Losers Motorcycle Club tea stall.

The first in a summer of Holiday **Fun Fridays** hits Woolwich's General Gordon Square on 28 July. Running from 10 am to 4 pm, there'll be free crafts, fairground fun and food!

The grounds of Eltham Palace and Gardens are the stunning setting for the weekend-long **Legendary Joust**, with four mounted knights tilting at one another in the lists. 29 and 30 July.

Summer Sessions throughout August on Greenwich Peninsula. Join in to celebrate the best in dance, music, food and film every weekend in August. From film screenings to cooking classes, live music to dance workshops, there's something to be found for everyone, all hosted in the heart of the Design District at Greenwich Peninsula.

ORNC Hidden Dome Tours
<https://www.visitgreenwich.org.uk/whats-on/hidden-dome-tours-p1954271>

Wren300 events:
Main Greenwich events are here:

Wren tours
<https://www.visitgreenwich.org.uk/whats-on/wren-tours-300-years-of-wren-p1873091>

A more Greenwich specific focus includes
<https://wren300.org/events/the-wren-london-series-talks-explore-wrens-grandest-designs-across-the-capital/>

Greenwich+Docklands International Festival 2023 (25 August–10 September)
This year's award-winning festival of FREE outdoor arts and theatre takes place across eighteen days. The 2023 programme is bringing together UK and international artists in a programme of ground-breaking outdoor theatre, performance, art, dance and circus in iconic public spaces across the Royal Borough of Greenwich, East London and the City of London.

Woolwich Words & Sounds 2023 (September). Venue: Woolwich Works, Royal Arsenal. Over three weeks in September, Woolwich Works is hosting the second Woolwich Words & Sounds. A season of live music and stand-up comedy, alongside cocktails and street food at the pop-up summer bar in our courtyard.

Punchdrunk's The Burnt City (now until 24 September). Venue: One Cartridge Place, Royal Arsenal, Woolwich.

Enter a world of gods and mortals. Experience the epic new world from Punchdrunk, 'the world-conquering theatre rebels' (*Evening Standard*), as the greatest of Greek tragedies is transported to a sprawling dystopian labyrinth. Amid the moments surrounding the fall of Troy, a mythical world of gods and mortals rises from the ashes. Discover a colossal playground that you are free to explore. Move between the haunting palace of Greece to the pulsating neon back streets of downtown Troy. Follow strangers who emerge from the shadows and seek out tales hiding in the deepest parts of the city.

Greenwich Arts Society

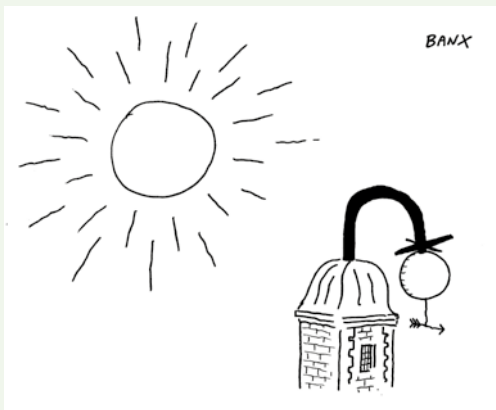
The making of the Met - the grandest American museum

Andrew Hopkins

Monday 10 July 2023

James Wolfe Primary School, Royal Hill, Greenwich.

The Temple of Dendur occupies the west wing of this museum which was specially built to house this new arrival, and was gifted by Egypt to the United States in 1967 during the presidency of Lyndon B. Johnson. Another wing displays the celebrated early Italian Renaissance collection of Robert Lehman, scion of the now demised investment bank, while its Expressionist holdings are one of the best in the world. Jayne Wrightsman donated all her fabulous Louis XIV furniture and bequeathed 80 million dollars for further acquisitions. Countless other grandees of old and new New York society gave their prized possessions and paintings and this talk examines how the Met, from its founding in 1870, was and remains the greatest and grandest museum in America.



Support us and receive our Newsletter every two months

To join online visit our website at greenwichsociety.org.uk and follow the links or use this QR code.

For membership enquiries or changes to contact information (address, telephone, email etc.), write to:

Honorary Secretary at
membership@greenwichsociety.org.uk
(or see the address below)



President

Ursula Bowyer

Officers

Chair: Dr Kevin Fewster

Vice-Chair: Lysanne Wilson

Honorary Secretary: Christopher Swift
secretary@greenwichsociety.org.uk
PO Box 79190, Greenwich, London SE10 1GQ

Honorary Treasurer: Miles Storey
treasurer@greenwichsociety.org.uk
PO Box 79190 Greenwich London SE10 1GQ

Registered Charity: 262023

Member of the London Forum of Civic Societies
Supporter of Civic Voice

www.greenwichsociety.org.uk



@GreenwichSoc



@GreenwichSoc

The Greenwich Society Newsletter

Editorial

Editor: Lesley Hodsdon

Proof reader: Vivien Lipski

Photos by: Sheila Keeble, Jonathan Chandler, Jacky Robinson, Simon Bailey, Lesley Hodsdon, various contributors to the Photography competition

Front cover photo: Jonathan Chandler

Drawing: Edie Wickham

Cartoons: BANX

Design and Layout

Paul McPherson: www.paulmcpersonsdesign.com

Printed and Distributed by

SBS Printers, 7 Greenwich South Street, Greenwich, London SE10 8NW

The views expressed in the *Newsletter* are those of the contributors or groups and should not be interpreted as statements of Greenwich Society policy unless so stated.